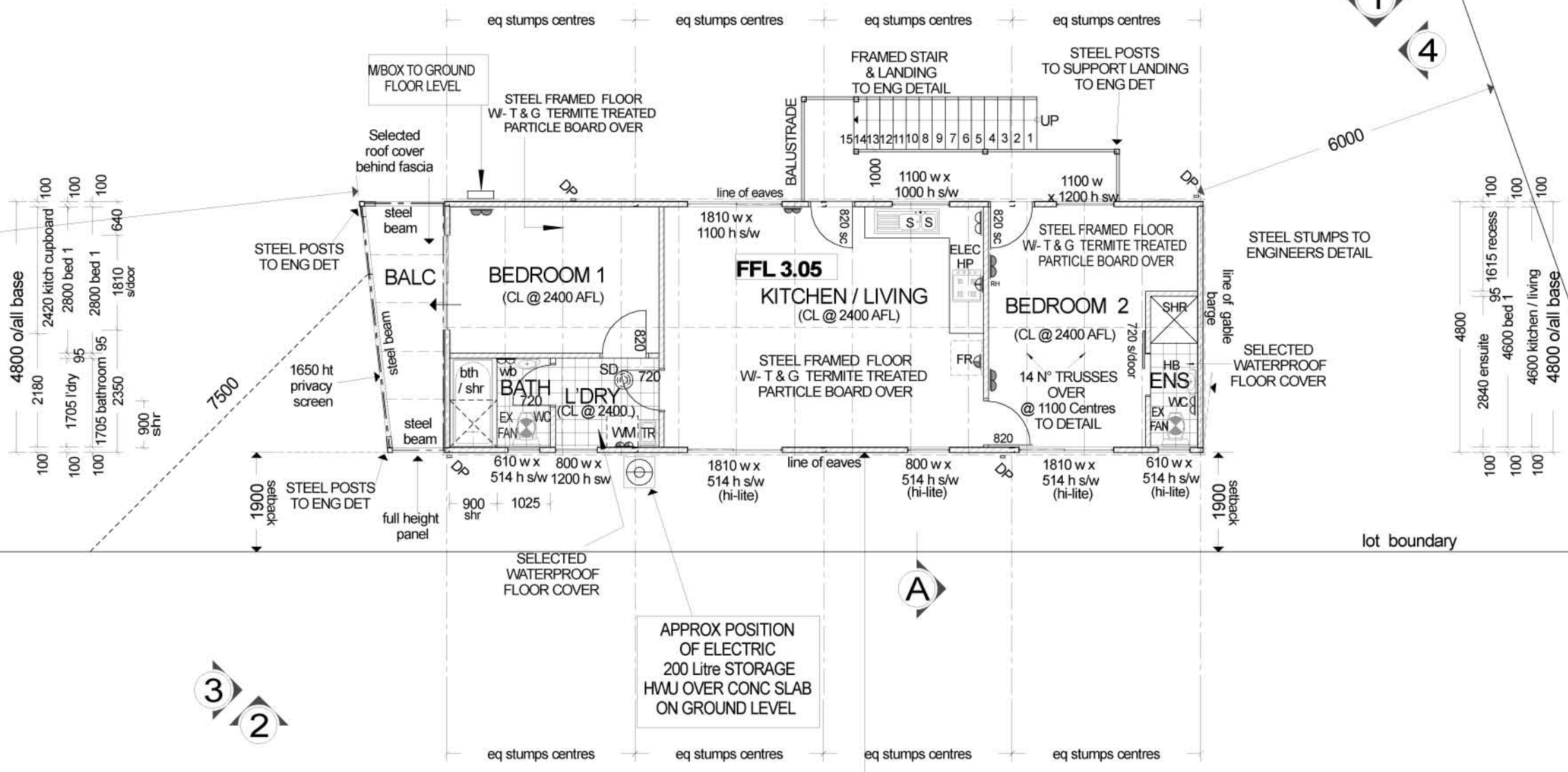
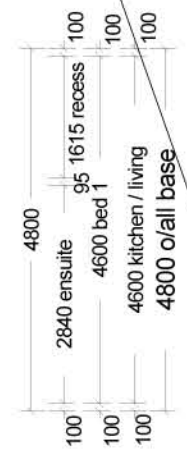
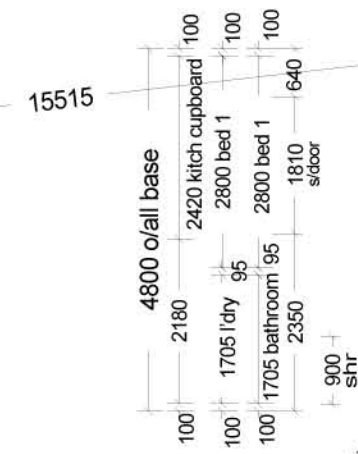
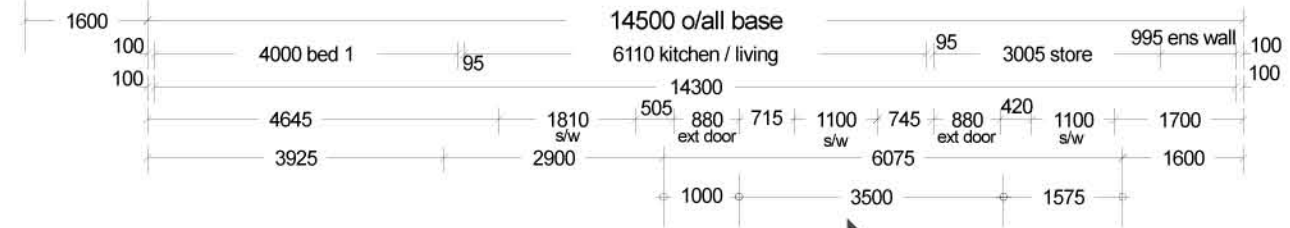


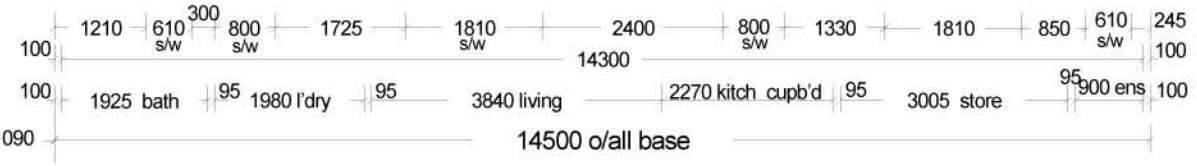
HOUSE AREAS

GROUND FLOOR STORE	69.60msq
FIRST FLOOR UNIT	49.92msq
FIRST FLOOR STORE	19.68msq



FLOOR PLAN
scale 1:100

NOTE :SELECTED SPLIT SYSTEM AIR COND UNIT WITH POWER TO LIVING WALL



ELECTRICAL LEGEND

- DOUBLE GPO @ 300 AFL
- DOUBLE GPO @ 975 AFL
- GPO FOR APPLIANCE @ 1800 AFL
- DOUBLE GPO @ 1350 AFL
- SINGLE GPO @ 1500 AFL
- W/PROOF DGPO @ 1000 AFL
- EXHAUST FAN
- SMOKE DETECTOR

NOTE : Internal studs are 75mm 1.12mm high tensile steel.
External studs are 90mm 1.12mm high tensile steel.

Date Oct 2017
Drawn M.A
Scale AS SHOWN

COPYRIGHT (C) RESERVED